



International Flood Initiative

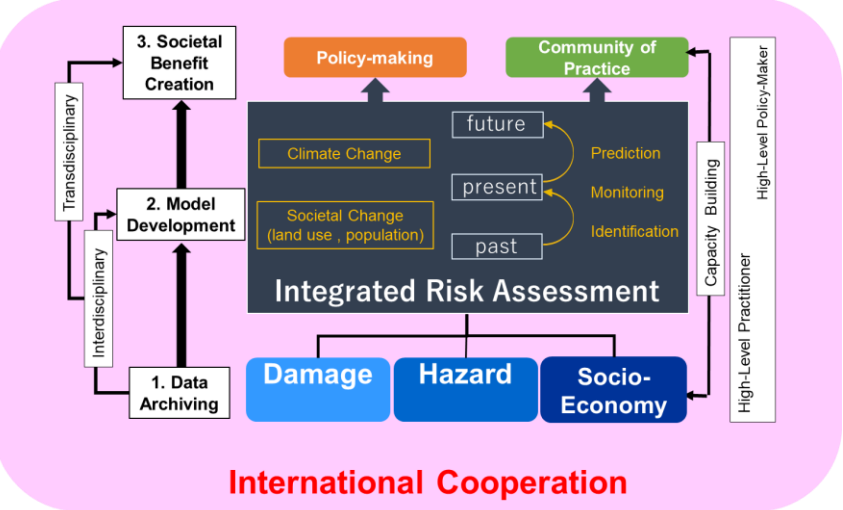
<http://www.ifi-home.info/>

International Flood Initiative (IFI) is a joint initiative in collaboration with such international organizations as UNESCO-IHP, WMO, UNISDR, UNU, IAHS, IAHR and ICHARM. IFI made its official launch in January 2005 at the World Conference on Disaster Reduction (WCDR) in Kobe, Japan. The IFI secretariat is located in the International Centre for Water Hazard and Risk Management (ICARM) in Japan.

IFI Partners



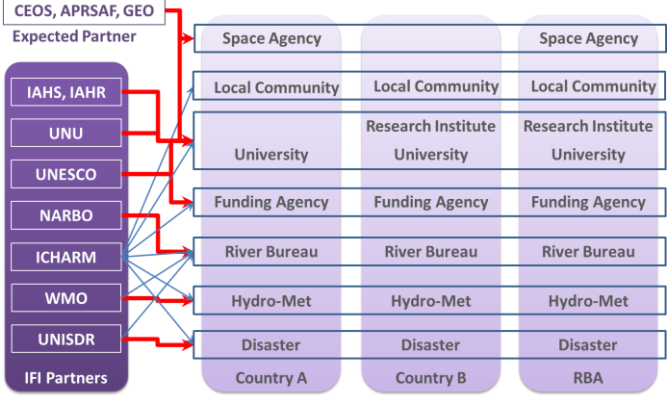
IFI Platform Concept



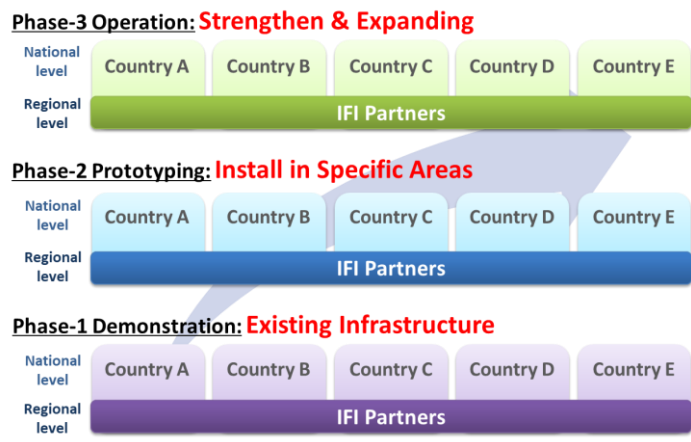
The platform works to connect the demand for sound and timely decisions and actions taken by policy-makers and local communities with the provision of disaster risk information that is generated from integrated risk assessment and risk change identification based on well archived data and statistics. The platform also strengthens stakeholders' capability and enables interdisciplinary and transdisciplinary approaches.

Conceptual Structure of Platform on Water Resilience and Disasters

IFI Implementation Strategy



Main support: →
Sub-support: →
Supporting Scheme in a Nation and Region



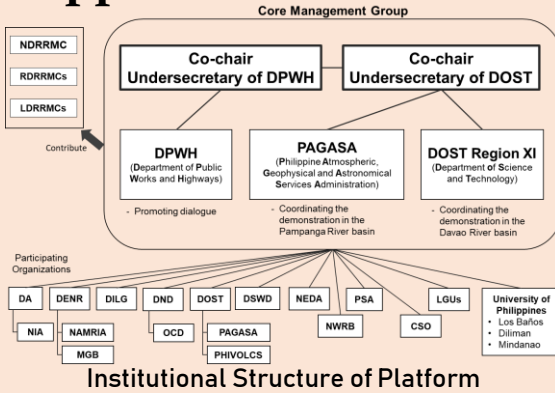
Spiral-up Implementation Framework



Platform on Water Resilience and Disasters

Platform activities with a transdisciplinary approach in some Asian countries

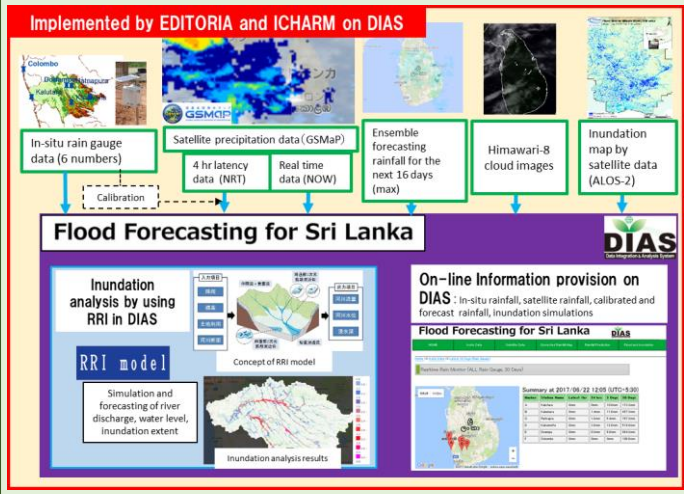
Philippines



IFI Coordinating Meeting
 Manila, March 10, 2017
 DOST, PAGASA, DPWH, OCD, NEDA, NAMRIA, PSA, UP, JICA, ICHARM

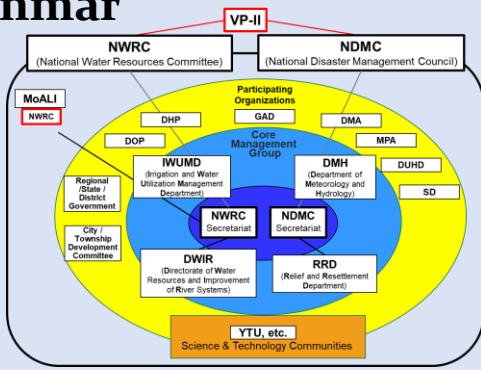


Sri Lanka



Rainfall Prediction and Flood Forecasting System installed in Sri Lanka

Myanmar



Institutional Structure of Platform



High-level Consultation Meeting at Nay Pyi Taw on May 9, 2017
 DMH, DWRI, RRD, IWUMD, YTU, JICA, JWJ, UT, ICHARM

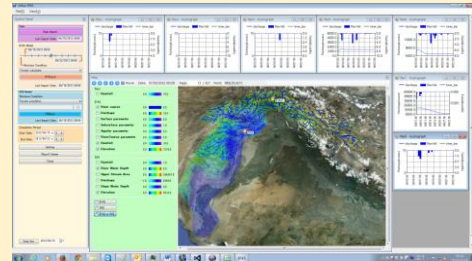
Pakistan

Participated Stakeholders



Stakeholders' Meeting at PMD Headquarter, Islamabad on March 3, 2017

- PMD
- PCRWR
- GCISC
- NARC
- NDMA
- UNESCO
- ICHARM



Flood Forecasting System installed and operated at PMD

IFI Secretariat:

The IFI secretariat is located in the International Center for Water Hazard and Risk Management under the auspices of UNESCO (ICHARM), Public Works Research Institute (PWRI).

Correspondence: Mamoru Miyamoto

E-mail: icharm@pwri.go.jp

Tel: +81-(0) 29-879-6809, Fax: +81-(0) 29-879-6709

1-6, Minamihara, Tsukuba, Ibaraki, 305-8516, Japan

