

AWCI Session 2021

Platform on Water Resilience and Disasters

Mahaweli Authority of Sri Lanka



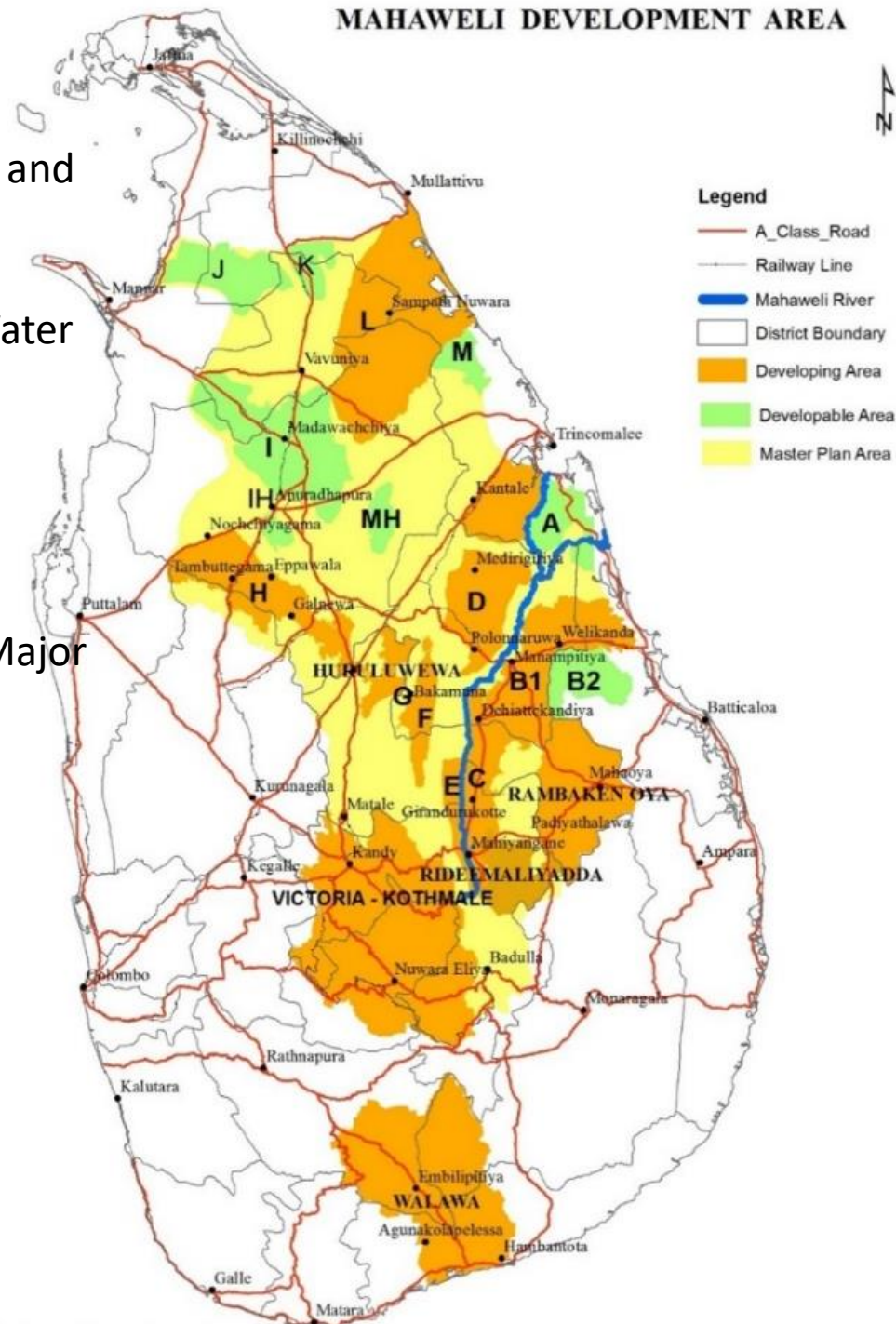
Eng. S.P.B Illangasingha
Deputy Director (Water Resources Planning)
26th March 2021

Introduction of the organization

- ✓ largest multi-disciplinary programme ever implemented in Sri Lanka.(Physical and Human Resources) (Initiated in 1961)
- ✓ Main purpose of the programme is water security of the country (Level of Water Security of a country is a Key Indicator of its Development Potential Establishment of Mahaweli Authority of Sri Lanka Act No.23of 1979.
- ✓ Mahaweli Authority of Sri Lanka is largest multi-disciplinary government organization. Water, Electricity, Agricultural, Land and Environment are the Major stream in the Organization.
- ✓ Cover 1/3 of the Area of Sri Lanka

Basic Salient Data of Mahaweli Development

- ✓ Static Water Storages > 3661 MCM
- ✓ Large Reservoirs > 15 ((Earth,Rockfill,Concrete Dam)
- ✓ Medium and Small Tanks >500
- ✓ Hydro Electric Power > 761 MW
- ✓ Canal Structures >12,000 km (Main+Branch+D+Field)
- ✓ Agricultural Development >150,000 Ha



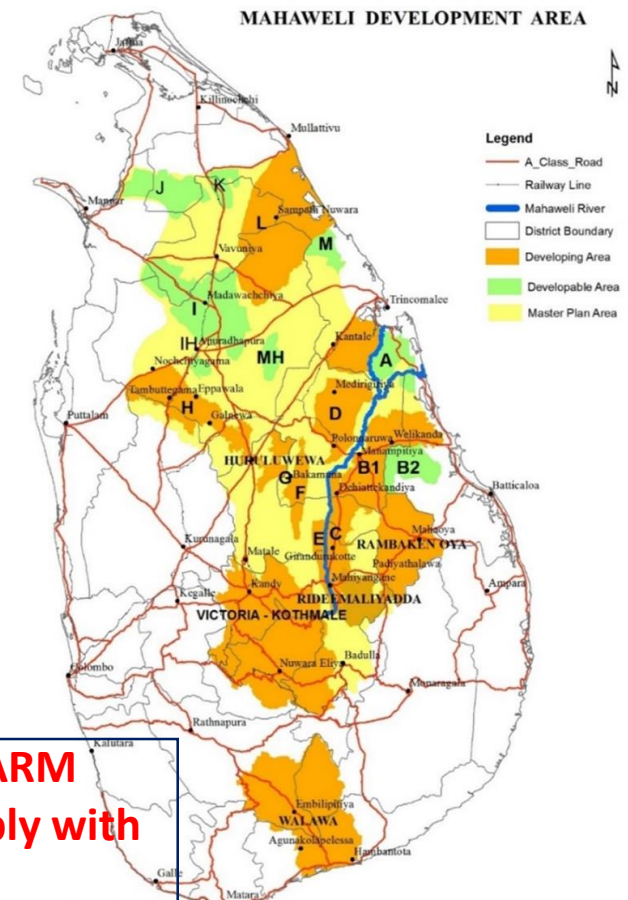
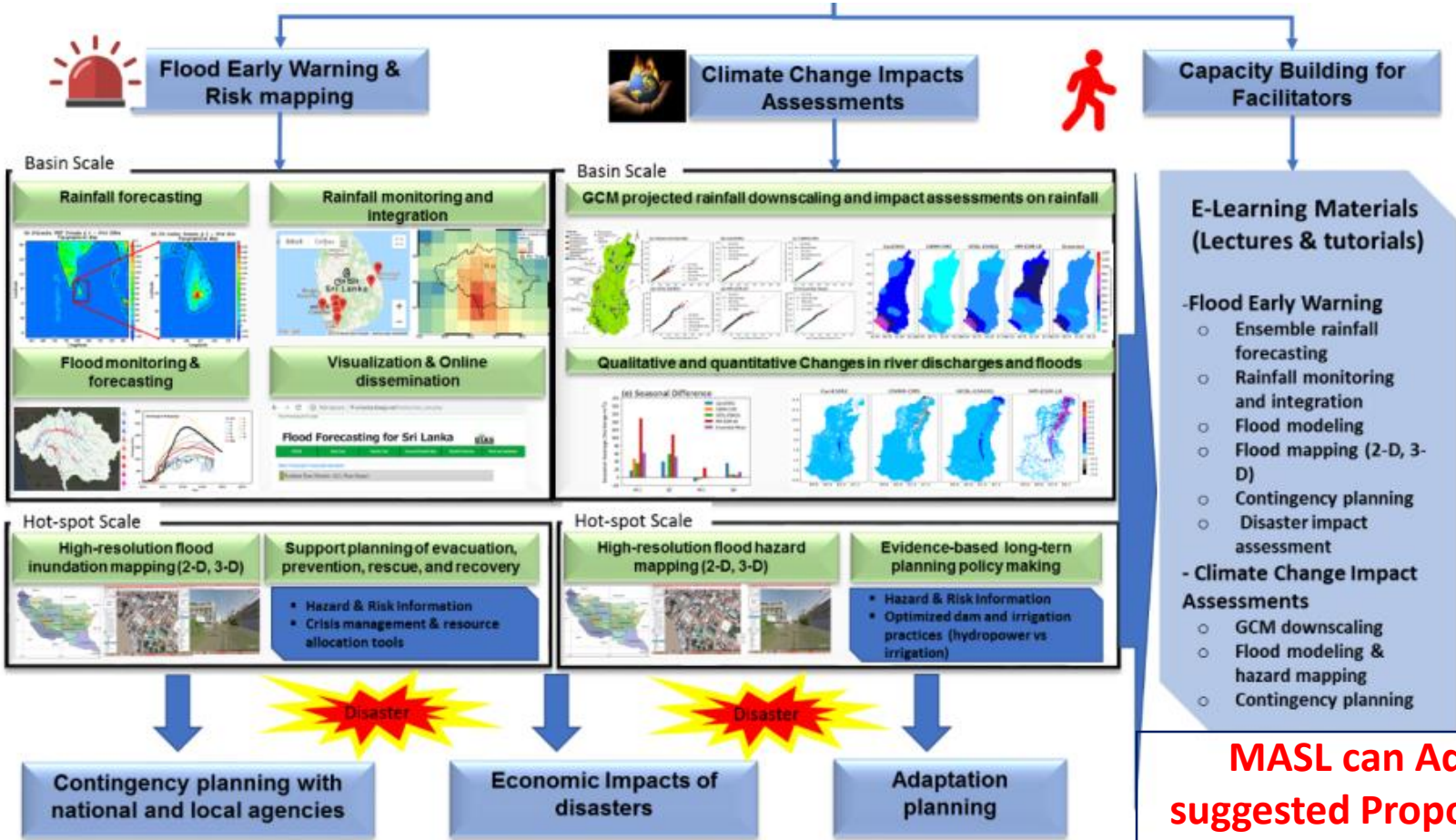
Mandates and duties

- ✓ The generation of hydroelectric power
- ✓ **Controlling floods**
- ✓ **Making irrigation facilities for dry zone cultivation and Drinking water**
- ✓ **Mahaweli Water Management**
- ✓ Settlement for landless people (Developing physical and social infrastructure required for human habitation by using the waters of the Mahaweli River)
- ✓ Increase local agricultural production
- ✓ Create employment opportunities

Adaptation of Online Synthesis System (OSS) for Mahaweli Basin

- ✓ Flood early warning and risk mapping for Mahaweli Basin/ Mahaweli areas
- ✓ Climate change adaptation planning for Mahaweli Areas
- ✓ Economic damage assessment for Mahaweli Areas
- ✓ Contingency planning
- ✓ Capacity building for facilitators/stakeholders

- MASL has big amount of raw data Relevant to above
- Still MASL did not analysis it
- Usually do old methods or do prediction based on conventional methods



MASL can Adopt the ICHARM suggested Proposal. Its comply with MASL requirement

Organizational strategy/plan for implementing the OSS

- ✓ Awareness the heads of the Technical divisions and other relevant key persons of the relevant divisions of MASL about the implementing the OSS
- ✓ Establishment of Key Team under the direct supervision of Deputy Director General (TS) (infrastructures available)

❖ **Technical Services Division**

- ✓ **Engineering Design and Planning**
- ✓ **Major Dams and reservoir Operation**
- ✓ **Water Management**
- ✓ **Downstream Development**
- ✓ **River Basin Development**

❖ **Planning and Monitoring Unit**

❖ **Development Division**

Assign the works accordingly (need to discuss with the heads of MASL)

- ❖ **Training / participants persons/ Capacity Building**
Directors, Engineers, Agronomies, Statisticians, Planners,

Thank You

