



UPDATES OF THE PLATFORM ACTIVITIES

4-0. REVIEW OF PLATFORM ACTIVITIES

ICHARM

GLOBAL TRENDS



International Flood Initiative (IFI)

International Flood Initiative (IFI) is a joint initiative in collaboration with such international organizations as UNESCO-IHP, WMO, UNISDR, UNU, IAHS and IAHR since 2005. ICHARM is the secretariat of IFI.

IFI partners



Support

Platform on Water Resilience and Disasters

Objective components (6)

- Data integration
- Climate change
- Economic assessment
- Flood forecasting
- Sediment disaster
- Contingency planning

Global Agendas



Sendai Framework for Disaster Risk Reduction 2015-2030



PARIS2015
UN CLIMATE CHANGE CONFERENCE
COP21-CMP11
Paris Agreement

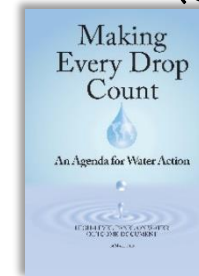


Sustainable Development Goals (2016-2030)



UN International Decade for Action: Water for Sustainable Development (2018-2028)

High Level Panel on Water (UN/WB)




12 world leaders issue clarion call for accelerated action on water

Outcome document (14 March 2018)

“Platform on Water Resilience and Disasters” is specified in the HLPW outcome document.

OUTCOME DOCUMENT OF HLPW (RELEASED ON 14 MARCH 2018)



(P24)

Sendai Framework) in an integrated manner. Platforms on Water Resilience and Disasters among all stakeholders should be formulated in countries to facilitate dialogue and scale up community-based practices.

- ◆ Disaster risk prevention and resilience should be integrated in long-term planning.
- ◆ Financing for and investment in water-related DRR and resilience should be doubled within the next five years. “Principles on Investment and Financing for Water-related DRR” should be used to make effective use of this increased investment and could help increasing investments in countries.

IFI PLATFORM PARTICIPATING COUNTRIES

Pakistan

- Indus River Basin

Philippine

- Pampanga River Basin

- Davao River Basin

Myanmar

- Bago River Basin

- Sittaung River Basin

Sri Lanka

- Kalu River Basin

- Kelani River Basin

- Malvathu River Basin

Indonesia

- Bengawan Solo River Basin

PROGRESS OF PLATFORM ACTIVITIES



- 1st Plenary Meeting** 13/3/2017, Metro Manila

Concept sharing
Platform formulation

- 2nd Plenary Meeting** 15/6/2017, Metro Manila



Platform framework
Data sharing guideline
Data list creation

- Representative Meeting** 18/9/2017, Hanoi
(DPWH, DOST, PAGASA)

Data list confirmation



- Individual Meeting** 7-9/2/2018, Metro Manila
(DPWH, PAGASA)

Secretariat assignment
Data collection

- Individual Meeting** 12-13/3/2018, Metro Manila
(PAGASA, DOST, DPWH)

Secretariat assignment
HLPW outcome document

- Stakeholders Meeting** 18/5/2018, Davao

Data upload

- 11th GEOSS Symposium** 24-26/10/2018, Kyoto

Regional coordination

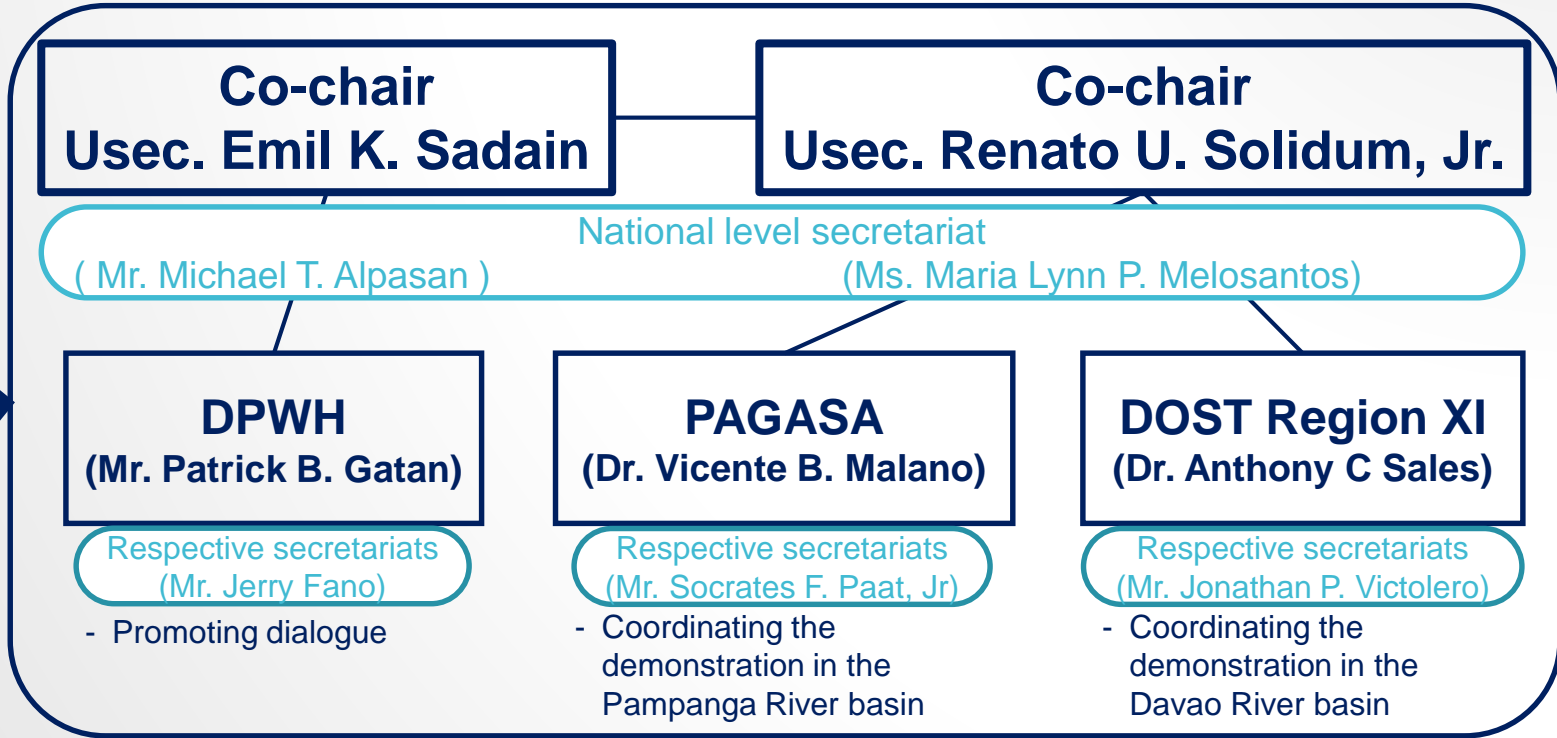
- 3rd Plenary Meeting** 7/2/2019, Metro Manila

Activity update & implementation

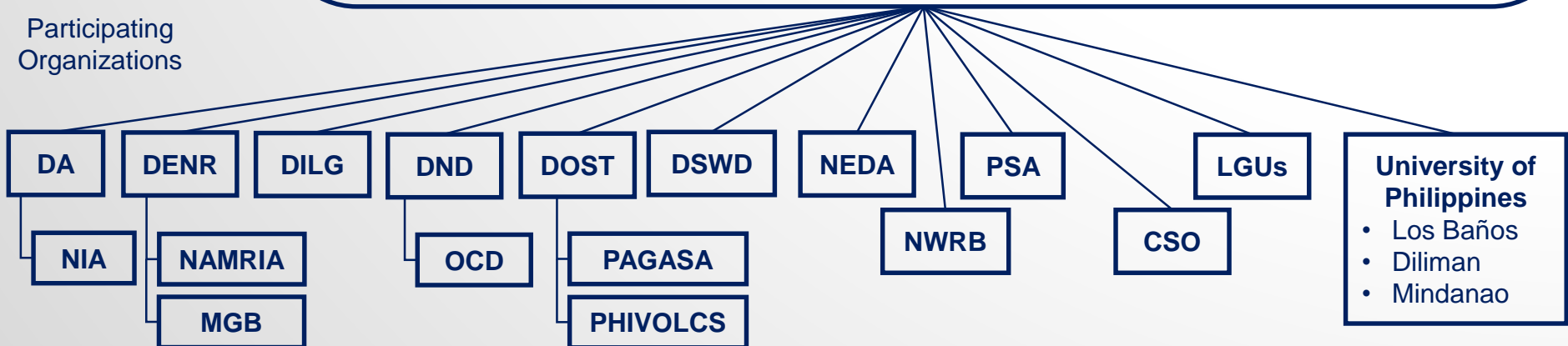
PLATFORM ON WATER RESILIENCE AND DISASTERS

- NDRRMC
- RDRRMCs
- LDRRMCs

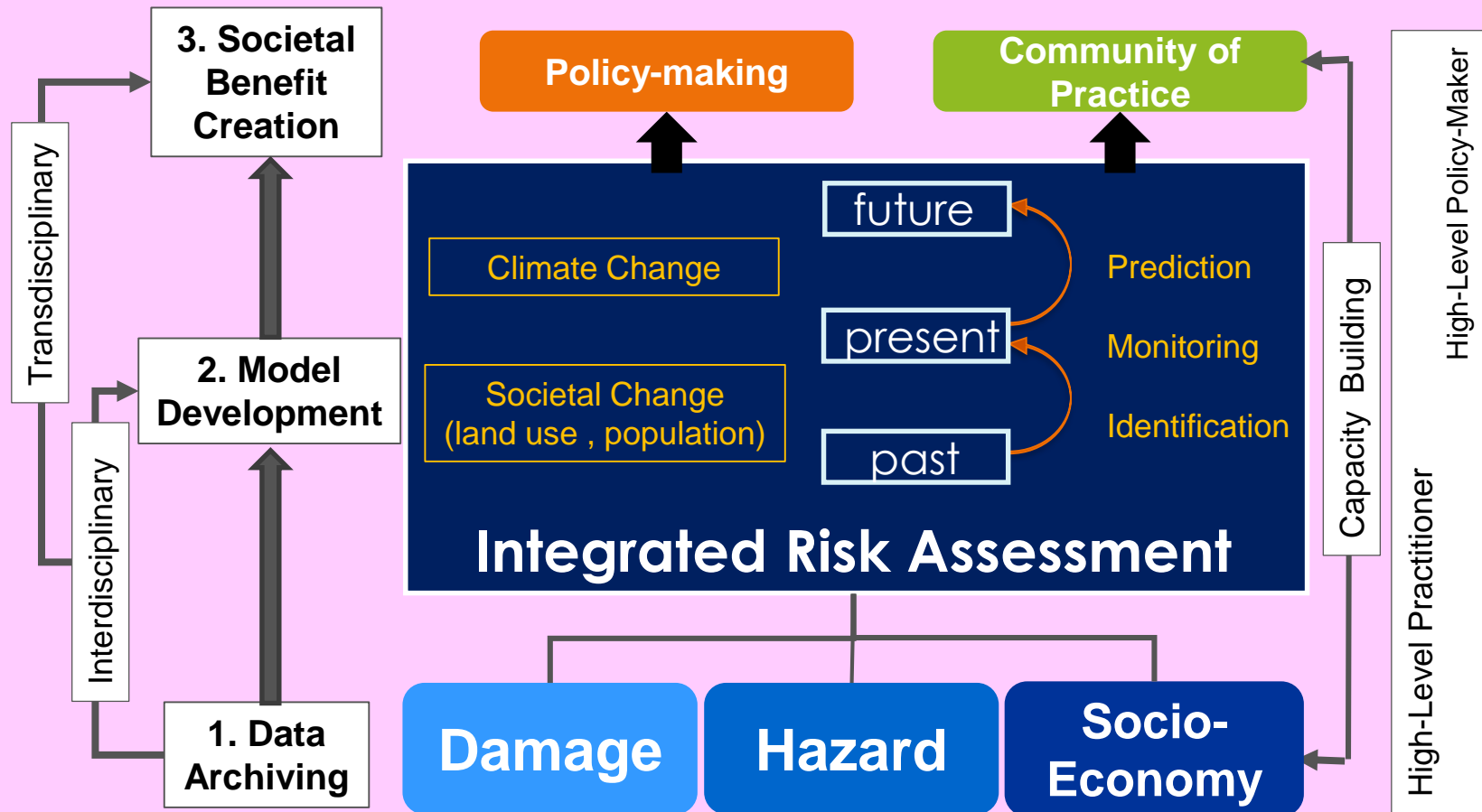
Contribute



Participating Organizations



CONCEPT OF PLATFORM



International Cooperation

CONCEPT NOTE OF PLATFORM

**Proposed Platform on Water Resilience and Disasters
as part of the National Platform for Disaster Risk Reduction
(draft)**

Vision

Platform envisions a future wherein decisions and actions for reducing water-related disaster risk are well supported by coordinated, comprehensive and sustained risk communication.

Mission

To realize its Vision, Platform works to connect the demand for sound and timely decisions and actions taken by policy-makers and local communities with the supply of disaster risk information that is generated from integrated risk assessment and risk change identification based on well archived data and statistics. In doing so, Platform strengthens data integration and analysis functions by facilitating data and information accessibility and application to decisions and actions within and across many different stakeholders.

Scope

Decisions and actions for reducing risk on water-related disasters, including floods, landslides and droughts, rely, and will continue to rely, on the ability of expert communities to collect and archive data from various sources and combine these with social and economic analyses. Platform strengthens experts' capability of data collection and archiving, integrated assessment and risk change identification and stakeholders' capacity for making maximum use of these data and information provided from the experts. Platform contributes to institutional and infrastructural design and investment including land use management and climate change adaptation (static approach) and to effective response and recovery (dynamic approach).

Implementation Strategy and Schedule

Platform follows the IFI spiral-up implementation strategy and works in tandem with International Decade for Action, "Water for Sustainable Development", 2018-2028. In its demonstration phase, Platform focuses on two river basins, the Pampanga and the Davao; develops data integration and analysis functions by which the stakeholders work together with science communities at local and national levels; creates actionable information supporting in policy-making and community of practice; reflects integrated data and information to institutional and infrastructure designs and community actions;

DATA SHARING GUIDELINE

Platform on Water Resilience and Disasters in the Philippines (PLATFORM) Data Sharing Guidelines

PLATFORM recognizes that the societal benefits arising from its cooperative activities can be fully achieved through the sharing of data, information, knowledge, products and services among the participants in PLATFORM at least. PLATFORM also associates itself with the trend towards open data worldwide while agency policies or legislation preclude the sharing of data as Open Data. In order to set up data sharing guidelines which balance the interests of both data users and providers in the light of the above mentioned constraints, it is considered useful to divide PLATFORM data into the following two categories:

Category 1: Data, metadata and products are shared as Open Data by default.

Category 2: Data, metadata and products are shared only among the PLATFORM Participants

Category 3: Data, metadata and products are shared with those who get a permission from the data provider.

All PLATFORM data users are requested to follow the guidelines as below:

1. If there is any data policy indicated by the data provider, that policy always has priority over this Principles.
2. PLATFORM data are to be used only for the public interest, scientific research or education. Commercial use and exploitation of PLATFORM data sets are prohibited
3. Any modification or change of the original PLATFORM data sets is prohibited.
4. Any re-export or transfer of the original data sets to a third party is prohibited.
5. Whenever PLATFORM data sets are used for publication of scientific results, the author(s) shall send a copy of the respective publication, preferably in an electronic form or in a separate printed version, to the PLATFORM CONTACTS as indicated below.

Category 1:
Full open

Category 2:
Among Platform

Category 3:
With permission

HOLISTIC VIEW

Investment
Direction

Policy-
making

Decision-
making

Local
Practices

Societal Benefit
(Water Disaster Risk Reduction)

Integrated Risk Assessment

4. Economic
Assessment

2. Flood
Forecasting &
Early Warning

3. Climate
Change
Impact

1. Data Integration

Damage

Hazard

Socio-
economy